

New build property with panoramic views

Price : € 2.200.000



Rooms : 7 **Bedrooms :** 4 **Bathrooms :** 4 **Sqft :** 380 m² **Type :** House
Land Area : 2500m² **Reference ID :** 5229740

In a lovely setting in walking distance from Plascassier village enjoying panoramic views to the sea, the Esterel hills and the city of Grasse, beautiful 380m² new build villa on grounds of 2500m².

The villa is nearing the end of its construction, with some finishing to be done. The property can be either bought as is , or completely finished with the option to make some changes in the end result.

The layout provides for a large entry hall, vast living room opening to the terraces and the views, a beautifully equipped kitchen, a large office master bedroom with dressing and bathroom, visitor toilet and a lift servicing all levels. The lower level consists of 3 identical bedrooms with en-suite bathrooms, a wine cellar, technical room with access to a huge cave, and a massive garage.

Outdoors are large terraces with a 14x4m heated swimming pool in black granite that can be closed by a movable terrace. A poolhouse with summer kitchen, shower and toilet is foreseen.

The garden is laid out over several terraces and will be planted and fenced off. Parking for several cars.

The design and specification of this property is far above the general building standards, with great care taken in all aspects of finishing.

The end result will be an eco-friendly house which will be a joy to live in.

Features :

Crawl space	Double flow ventilation	Double glazing	Electric shutters
Fireplace	Home automation	Internet	Sliding windows
Water softener	Barbecue	Irrigation sprinkler	Outdoor lighting
Lift	Electric gate	Security door	Videophone

Bowling green

Swimming pool

Area`s:

1 Land

1

1 Study

4 Bedroom

4 Bathroom

1 Cellar

1 Storage room

1 Laundry room

Nearby:

Airport (25 minutes)

Beach (15 minutes)

Golf (5 minutes)

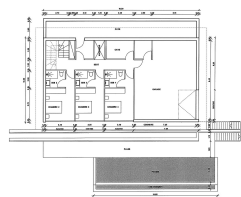
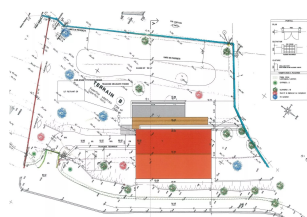
Shops (5 minutes)

Supermarket (5 minutes)

Town centre (5 minutes)

Energy - Conventional consumption Class : A

Energy - Conventional consumption : 39 kWh/m².year



See more

<https://azurpavillon.com/real-estate/listing/new-build-property-with-panoramic-views-5229740>