

# 17th century bastide nestled in the heart of 2.8 hectares in Besse sur Issole

Price : € 1.950.000



Rooms : 18      Bedrooms : 10      Bathrooms : 10      Sqft : 740 m<sup>2</sup>      Type : House  
Views : Countryside      Land Area : 28000m<sup>2</sup>      Reference ID : DELEG10486 / DELEG10486

In a quiet environment, surrounded by vineyards, this property from 1616 is ideal to run a top of the range gites and B&B business, as it has a main bastide with : an entrance hall, an office, a cathedral 120 m<sup>2</sup> living room, a professional kitchen, a 60 m<sup>2</sup> veranda/dining room, five large 50 m<sup>2</sup> ensuite bedrooms, of which two double ones and some offering magnificent vaulted stone built ceilings. There are also two independent one-bedroom apartments of 70, 72 and 100 m<sup>2</sup> and three 33 m<sup>2</sup> studios. Well, vast heated swimming pool with a 70 m<sup>2</sup> pool house, a tennis court, a yoga space, a Jacuzzi, air conditioning, solar panels. A real haven of peace!

Information on the risks to which this property is exposed is available on the Géorisques website : [georisques.gouv.fr](http://georisques.gouv.fr)

## Features :

Fireplace	Double glazing	Swimming pool	Tennis court
Water softener	Air-conditioning	Internet	
	Irrigation sprinkler	Barbecue	Outdoor lighting
Well drilling	Caretaker		

## Area`s:

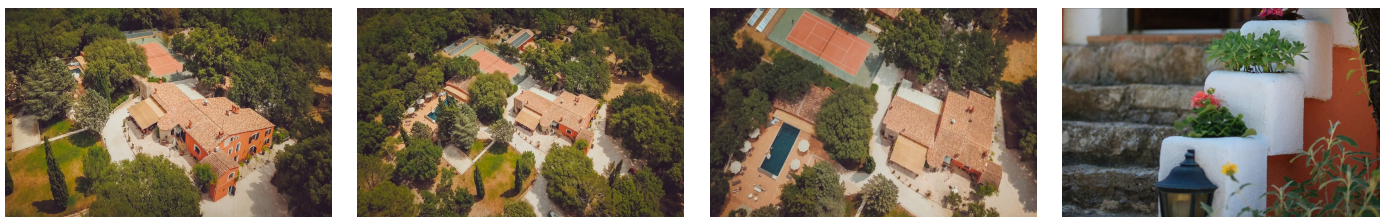
1 Land	10 Bedroom	10 Shower room / Lavatory	1 Veranda
1 Pool house	1 Living-room		

## Nearby:

Town centre (4 km)

Energy - Conventional consumption Class : D  
Energy - Emissions estimate Class : C  
Land Value Tax : 6.775 € / year

Energy - Conventional consumption : 197 kWh/m<sup>2</sup>.year  
Energy - Emissions estimate : 11 kg éqCO<sub>2</sub>/m<sup>2</sup>.year



See more

<https://azurpavillon.com/real-estate/listing/17th-century-bastide-nestled-in-the-heart-of-28-hectares-in-besse-sur-issolle-6977759>