

# PROPERTY LA STE BAUME T5

Price : € 730.000



**Rooms :** 5      **Bedrooms :** 3      **Bathrooms :** 3      **Sqft :** 200 m<sup>2</sup>      **Type :** House  
**Views :** Hills, Forest, Countryside, Sky      **Land Area :** 15000m<sup>2</sup>      **Reference ID :** 2174 / 2174

Discover this exceptional property located close to la Sainte-Baume, just 30 minutes from Saint-Maximin. Nestled on a plot of 1.5 hectares, living space of 347 m<sup>2</sup>, surrounded by a carefully landscaped park.

The main room of 80 m<sup>2</sup>, air-conditioned, opens onto a breathtaking view of the Sainte-Baume massif thanks to three French windows. You will find a modern open kitchen.

The property also has a communicating studio of 42 m<sup>2</sup> with a separate entrance, .

Upstairs, a wide staircase leads you to a large 42 m<sup>2</sup> master suite, also air-conditioned, with a panoramic terrace to enjoy the surrounding landscapes.

The false basement, spacious and convertible, offers 160 m<sup>2</sup> of space with reserves for two large French windows,

The quality of construction is exceptional, double flow ventilation, heat pumps, video surveillance. Very nice features.

This rare property is the dream opportunity for those looking for a living space combining comfort, tranquility and development

SAS astrid segaar immobilier  
57 Les Rives du Golf – 6610 RD 7 – Le Perrussier  
83520 Roquebrune-sur-Argens, France  
Carte professionnelle : 8303 2018 000 026 682

Tel. +33 (0) 49 8122065  
Port. +33 (0) 6 69 27 29 08  
astrid@azurpavillon.com  
www.azurpavillon.com

IBAN : FR76 1460 7003 8760 1217 2279 814  
BIC : CCBPFRPPMAR  
TVA intracommunautaire : FR28752484360  
SIRET : 752 484 360 00017 – SAS capital de 1000 €

possibilities.

**Features :**

Double glazing	Internet	Car port	Electric gate
Security door	Video security	Videophone	Air-conditioning
Sliding windows	Crawl space		

**Area`s:**

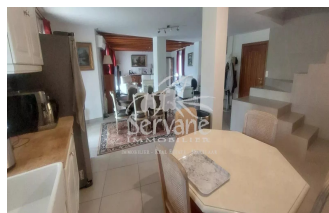
1 Kitchen	1 Living room/dining area	1 Living-room	1 Corridor
1 Bedroom	1 Terrace	1 Shower room	1 Lavatory
1 Bedroom	1 Shower room	1 Bedroom	1 Balcony
1 Cellar	1 Cellar	1 Laundry room	1 Shower room
1 Cellar	1 Cellar	1 Cellar	1 Garage
1 Garage	1 Garden shelter	1 Land	

**Nearby:**

Highway (30 minutes)

Energy - Conventional consumption Class : B  
Energy - Emissions estimate Class : A

Energy - Conventional consumption : 52 kWh/m<sup>2</sup>.year  
Energy - Emissions estimate : 1 kg éqCO<sub>2</sub>/m<sup>2</sup>.year



See more

<https://azurpavillon.com/real-estate/listing/property-la-ste-baume-85152207>